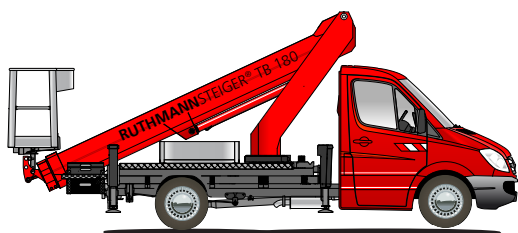




RUTHMANN
professionals at work

STEIGER® TB 180



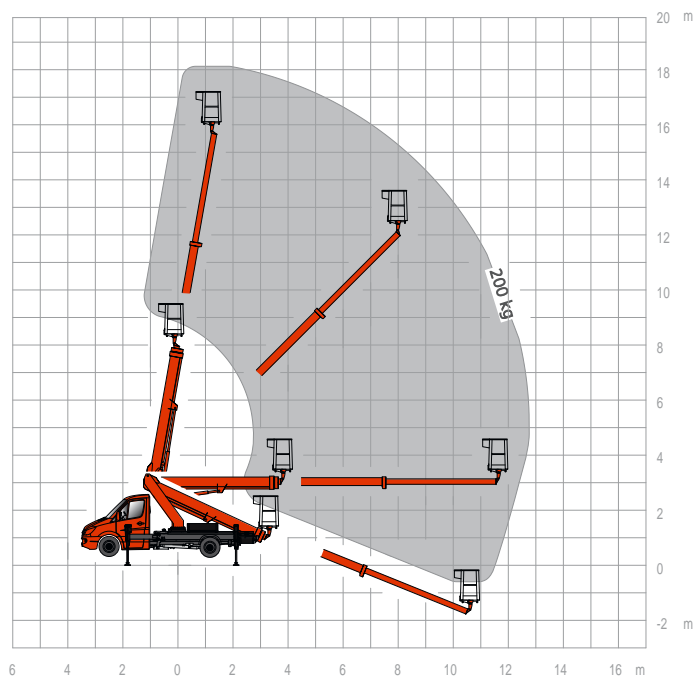
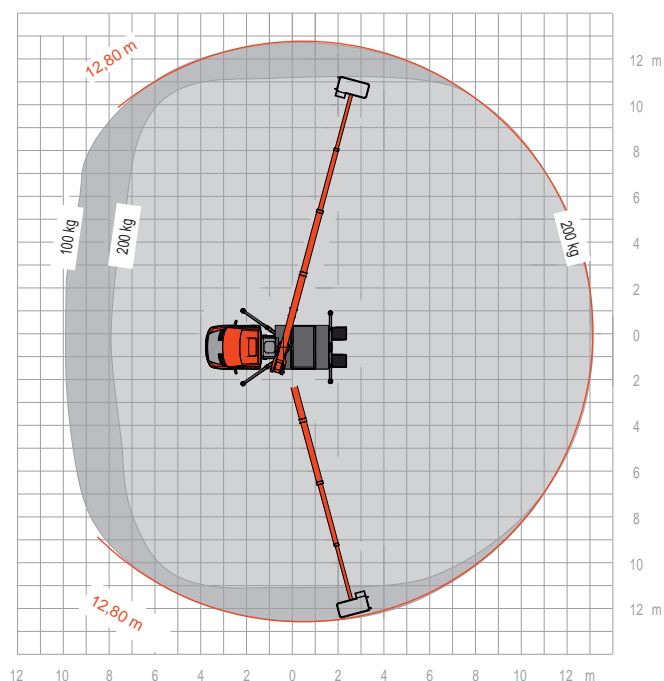
RUTHMANNSTEIGER® TB 180 flexible und useful!

- 18 m working height
- 12.8 m outreach with 200 kg cage load
- time-tested horizontal/vertical jacking mechanism for variable jacking widths
- permissible inclination: 5°
- diverse base vehicles ≥ 3.5 t (GVW)*
- automatic set-up/retraction mechanism, memory-positioning system and many other innovative functions
- clearance height 3 m; clearance width 2 m
- hydrostatic cage levelling
- quick navigation thanks to multiple movements

*gross vehicle weight



For further information go to: www.ruthmann.de/tb180en





RUTHMANN
professionals at work

STEIGER® TB 180

Truck-mounted access platforms must nowadays fulfill demanding qualities. In this 3rd model version, the TB 180 has several features that are unique, new and innovative for this equipment class and are the fulfilment of previously unfulfilled requirements for our customers. The TB 180 stands for: 18.0 m working height and 12.8 m outreach even with 200 kg cage load.

Furthermore many other typical **RUTHMANN** features combined with the newest carrier-chassis from a permissible total weight of 3.500 kg, are equipped in this unique TB 180 STEIGER®. That the **RUTHMANNSTEIGER®** TB 180 is a truck-mounted aerial platform which meets the requirements of many different user groups, such as rental companies, craftsmen (painters, tree surgeons, roofers, building cleaners, communities, energy companies etc.), is shown by the fact that hundreds of TB-STEIGER® have been tried and tested in daily use. Of course the current TB 180 is equipped with the diverse standard fittings which turned out to be practical in the past. 200 kg working cage load, automatic positioning system, automatic return to basic position, information and diagnosis system, cage rotating device, memory function for easy activation of the working position selected

last, narrow clearance width of only 2.0 m, low clearance height of only 3.0 m, short wheelbase of the possible carrier chassis (to enable easy vehicle handling even in inner-city traffic) are just a few of the main features. Naturally the information about the new features of the latest STEIGER® TB 180 is much more important:

a) Horizontal-vertical jacking:

A totally new and revolutionary feature for this equipment class is the horizontal-vertical jacking. It was modelled on the outstanding features which have been available in the larger series for many years. It is operated simply and conveniently from the working cage.

b) Jacking in the vehicle profile, on one side or completely:

Trouble-free performance of work in narrow streets and driveways is possible because jacking of the STEIGER® can be adapted to every work situation. Of course the corresponding performance data are automatically assigned by the equipment control depending on the jacking position.

c) 5° Inclination:

A further ground-breaking **RUTHMANN** innovation in this class is the permissible 5° inclination with automatic reach adjustment. The STEIGER® can be positioned and put into operation easily and effortlessly even on sloped sites.

d) Turret gooseneck:

For one-sided jacking or jacking in the vehicle profile, the turret gooseneck was designed in a way that it does not project beyond the mirror width of the vehicle when the boom system is rotated.

e) Multiple movements:

All STEIGER® movements (such as lifting, lowering, telescoping) and simultaneous rotation of the working cage can be carried out at the same time.

f) Mounting possibilities:

The TB 180 and also the TB 220 feature a weight-optimised design which enables their mounting on the newest carrier vehicles, e.g. from Mercedes-Benz, Volkswagen and others.

Please contact us – by phone, fax or e-mail.

We would be pleased to give you detailed information about the performance range of our proven STEIGER® and demonstrate the benefits and advantages of our product for you!



RUTHMANNSTEIGER® TB 180

	Working height	18,00 m		Total length of vehicle	7,20 m
	Lifting height	16,00 m		Perm. siting inclination	5°**
	Outreach	12,80 m*		Perm. total weight ≥	3.500 kg
	Size of working cage	1,40 x 0,70 m		Range of rotation	450°
	Carrying capacity of working cage	200 kg		Driving Licence	B / 3
	Overall height	3,00 m		Wheelbase carrier chassis	3,60 m

* depending on load, angle of rotation and outfit

** with restriction of performance data

All measurements and weights are approximate and refer to the standard basic execution. Technical alterations reserved. **STEIGER®**, **GELENKSTEIGER®**, **RÜSSEL®**, **FLEXILOADER®** and **CARGOLOADER®** are registered trademarks of **RUTHMANN GmbH & Co. KG**

RUTHMANN GmbH & Co. KG

P.O. Box 1263 - 48705 Gescher-Hochmoor - GERMANY

Fon: +49 28 63 204-0 - Fax: +49 28 63 204-212

Internet: www.ruthmann.de - E-Mail: export@ruthmann.de